



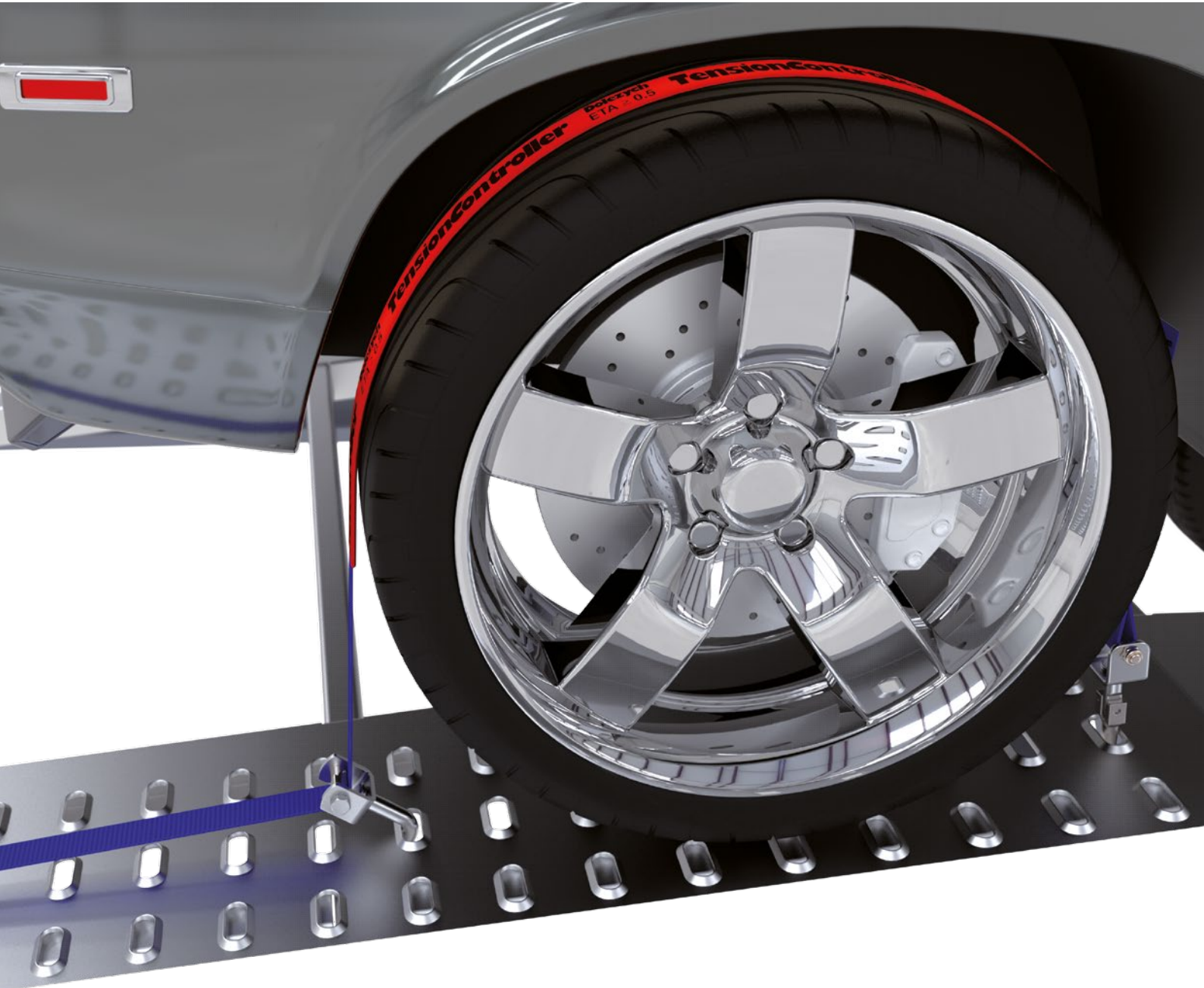
Simple. Safe. Tensioned.

**The TensionController
for vehicle transportation.**



TensionController:

The controller for simple and safe vehicle transportation (cars & trucks)



Since March 2017, we have been working with the TÜV SÜD Mobility Division and other companies from the industry to scientifically revolutionize the road transport of cars and trucks. The result is a new VDI 2700 Part 8.0, 8.1 & 8.2 from September 2024, which includes guidelines for load securing of cars as well as light and heavy commercial vehicles on vehicle transporters.

We have always developed our **DoCarLash** and **DoTruckLash** with **TensionController** product line in accordance with this directive and OEM loading regulations. We have been proudly presenting simple and safe systems for several years now. These naturally also comply with the newly published directive.

In addition to standard systems, our product portfolio in the **DoCarLash** and **DoTruckLash** segment also includes customized systems to make load securing on vehicle transporters easier for every customer.

The certification and guideline VDI 2700 Part 8.0, 8.1 & 8.2

In a nutshell: The lashing strap with controller as a securing device over the tire!

In the future, every lashing strap must be equipped with a controller for load securing during vehicle transport to prevent frictional contact with the tire and thus ensure force transmission on both sides of the tire (ETA value must be met). The lashing strap must also be prevented from slipping. The controller must be designed so that the webbing does not touch the tire.

Our lashing straps **DoCarLash** and **DoTruckLash** with **TensionController** are certified in accordance with the current VDI guidelines 2700 Part 8.0 and therefore guarantee optimum transmission and distribution of the applied pre-tensioning force thanks to the best sliding properties inside the **TensionController** (ETA value $\geq 0,5$). Our rubber on the underside ensures that it adheres perfectly to the tire of the secured vehicle and does not slip.

In general, the following characteristics must always be fulfilled:



Transportation of cars:

- Lashing straps according to DIN EN 12195-2
- Elongation $\leq 4,0\%$
- LC = 1.500 daN
- STF = 330 daN
- Webbing width ≥ 35 mm
- ETA value $\geq 0,5$



Transportation of trucks:

- Lashing straps according to DIN EN 12195-2
- Elongation $\leq 4,0\%$
- LC = 2.500 daN
- STF = 500 daN
- Webbing ≥ 50 mm
- ETA value $\geq 0,5$



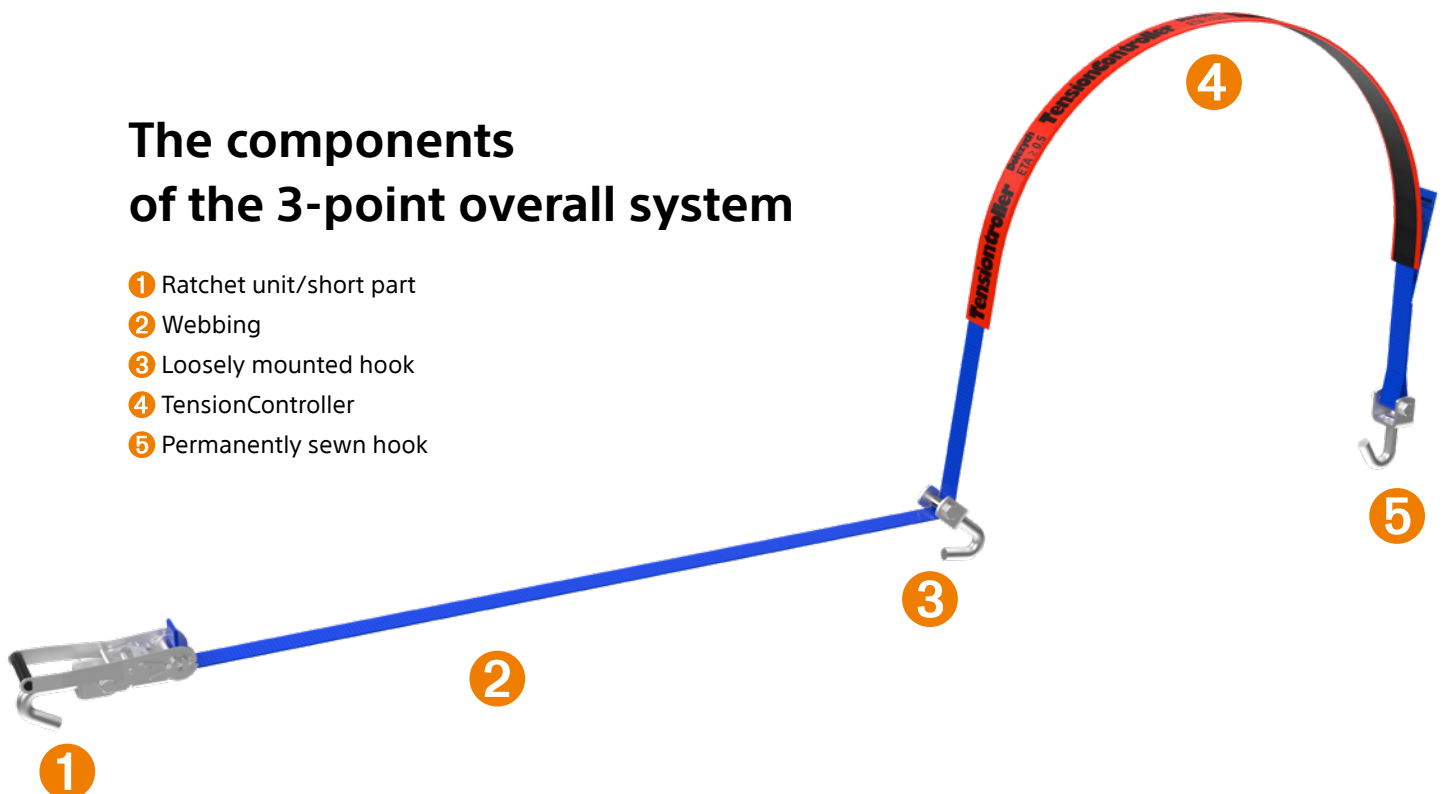
For further information or questions, please contact our technical team: technik@dolezych.de.



The certification is always valid for the combination of lashing strap and TensionController and may therefore not be randomly exchanged.

The components of the 3-point overall system

- 1 Ratchet unit/short part
- 2 Webbing
- 3 Loosely mounted hook
- 4 TensionController
- 5 Permanently sewn hook



DoCarLash & DoTruckLash with TensionController

Improved performance

Tested ETA value ($\eta \geq 0,5$) in accordance with the latest regulations, ensuring even and safe force distribution

Optimum grip on the tire

No more slipping of the webbing

Always safe on the road

- In accordance to DIN EN 12195-2
- Certified according to VDI guideline 2700 Part 8.0

Saves time

- Less re-tensioning thanks to low elongation in the webbing
- With the 1-piece system: The sewn stopper means that the webbing no longer needs to be threaded in

Protects floor panel, lashing strap & tires

Reduced load due to optimal force distribution

Dimensionally stable

Easy to place on the tire

TensionController TC35 & TC50

Space-saving use

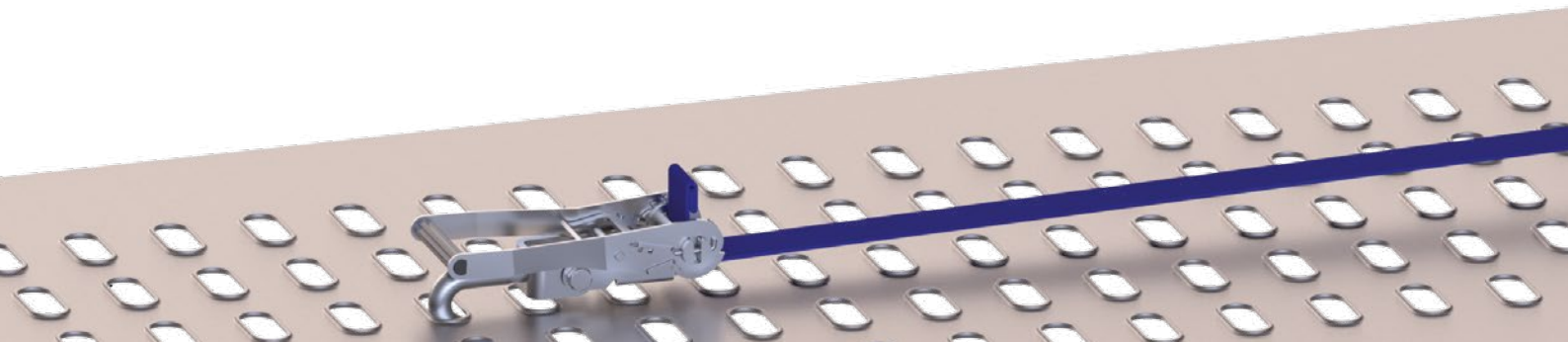
Particularly flat patented fabric construction

Compact

Easy & space-saving roll-up in the overall system

Durable & easy handling

Thanks to the edge strengthening and the patented fabric construction



TensionController Flex (TCF)

For all users who need to secure different vehicles with different tire sizes, there is now the **TensionController Flex**. It has the same advantages as the **TensionController TC35 and TC50**, but is also quick and easy to use on different tire sizes.

Result: The webbing does not come into contact with the tire, even with different tire sizes.

Our solution: The TCF with TC hose in the middle and TC mats at the ends



With our TCF, you can secure a wide variety of vehicles, from small cars to heavy commercial vehicles, whereby the TCF naturally also complies with the VDI. The foldable TC mats at the ends of the TCF mean that the TCF is never too short and the webbing does not come into contact with the tire. Because the ends are only designed as mats and not as a hose, the area that is not in contact with the tire can simply be folded down. Thanks to this technical trick, the **TensionController Flex** is never too long!

Your advantages with TCF

Never too short

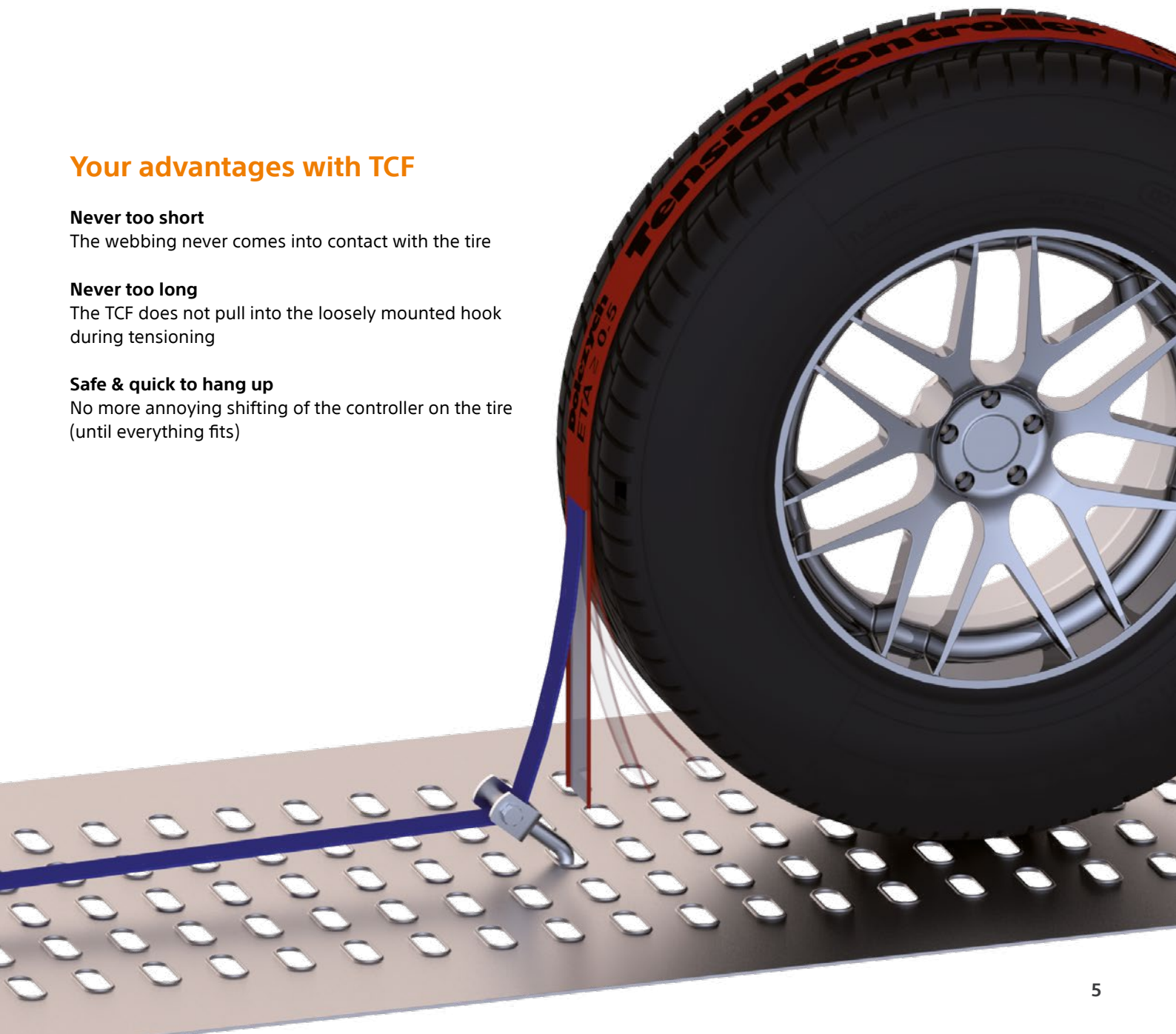
The webbing never comes into contact with the tire

Never too long

The TCF does not pull into the loosely mounted hook during tensioning

Safe & quick to hang up

No more annoying shifting of the controller on the tire (until everything fits)



Our standard systems for vehicle transportation



DoCarLash for our standard car systems:

- Webbing width: 35 mm
- LC: 1.500 daN
- STF: 330 daN
- Length L1 = 2,8 m



DoTruckLash for our standard truck systems:

- Webbing width: 50 mm
- LC: 2.500 daN
- STF: 550 daN
- Length L1 = 4,0 m
- L_{Fixed end} = 0,3 m

DoCarLash with TensionController Basic (TCB)



Item no.

11 – 2635 1029

- 1 Standard ratchet with car J-hook (long part sewn with multi-layer blocker)
- 2 PES webbing with elongation $\leq 4\%$
- 3 Car J-hook
- 4 TCB (TensionController Basic) with L = 1,1 m
- 5 Car J-hook



DoCarLash with TensionController (TC35)



Item no.

11 – 2635 1525

- 1 Standard ratchet with car J-hook (long part sewn with multi-layer blocker)
- 2 PES webbing with elongation $\leq 4\%$
- 3 Car J-hook
- 4 TC35 (TensionController) with L = 1,1 m
- 5 Car J-hook



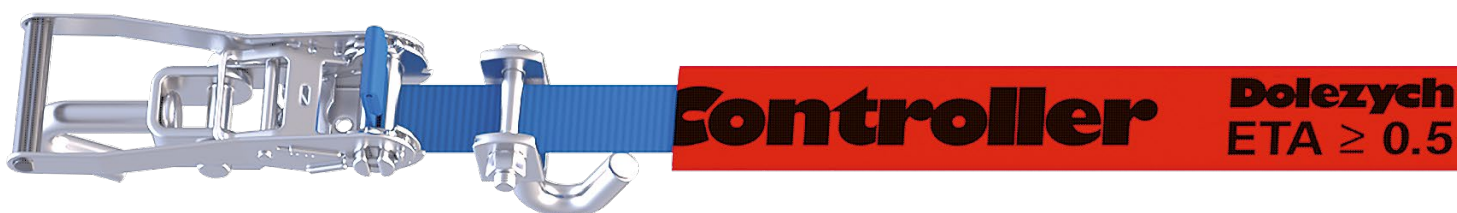
DoCarLash with TensionController (TC35) & low elongation



Item no.

11 – 2635 1526

- 1 Standard ratchet with car J-hook (long part sewn with multi-layer blocker)
- 2 PES/HMPE webbing with elongation $\leq 2,5\%$
- 3 Car J-hook
- 4 TC35 (TensionController) with L = 1,1 m
- 5 Car J-hook





Our variants with TC35, TC50 and TCF are available on request in all special lengths and with short part or as a special system.



Our TCF for the transportation of heavy commercial vehicles (LC = 2.500 daN) is also available on request.

TensionController
in our online shop:



DoCarLash with TensionController Flex (TCF)



Item no.

11 – 2635 1022

- 1 Standard ratchet with car J-hook (long part sewn with multi-layer blocker)
- 2 PES webbing with elongation $\leq 4\%$
- 3 Car J-hook
- 4 TCF (TensionController Flex) for application range 1,0 m - 1,4 m
- 5 Car J-hook



DoCarLash with TensionController Flex (TCF) & low elongation



Item no.

11 – 2635 1030

- 1 Standard ratchet with car J-hook (long part sewn with multi-layer blocker)
- 2 PES/HMPE webbing with elongation $\leq 2,5\%$
- 3 Car J-hook
- 4 TCF (TensionController Flex) for application range 1,0 m - 1,4 m
- 5 Car J-hook



DoTruckLash with TensionController (TC50)



Item no.

11 – 2658 5244

- 1 Short part with transmission pull-ratchet & car J-hook (L = 0,3 m)
- 2 PES webbing with elongation $\leq 4\%$
- 3 Car J-hook
- 4 TC50 (TensionController) with L = 1,5 m
- 5 Car J-hook

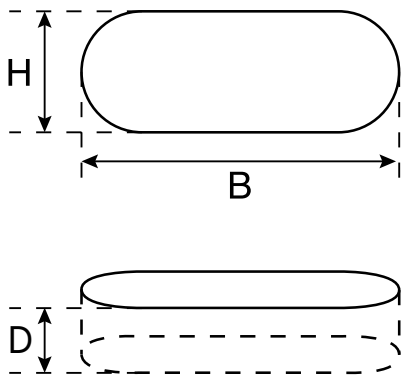


TensionController

Dolezych
ETA ≥ 0.5

Tensi

Which perforated plates fit our hooks?

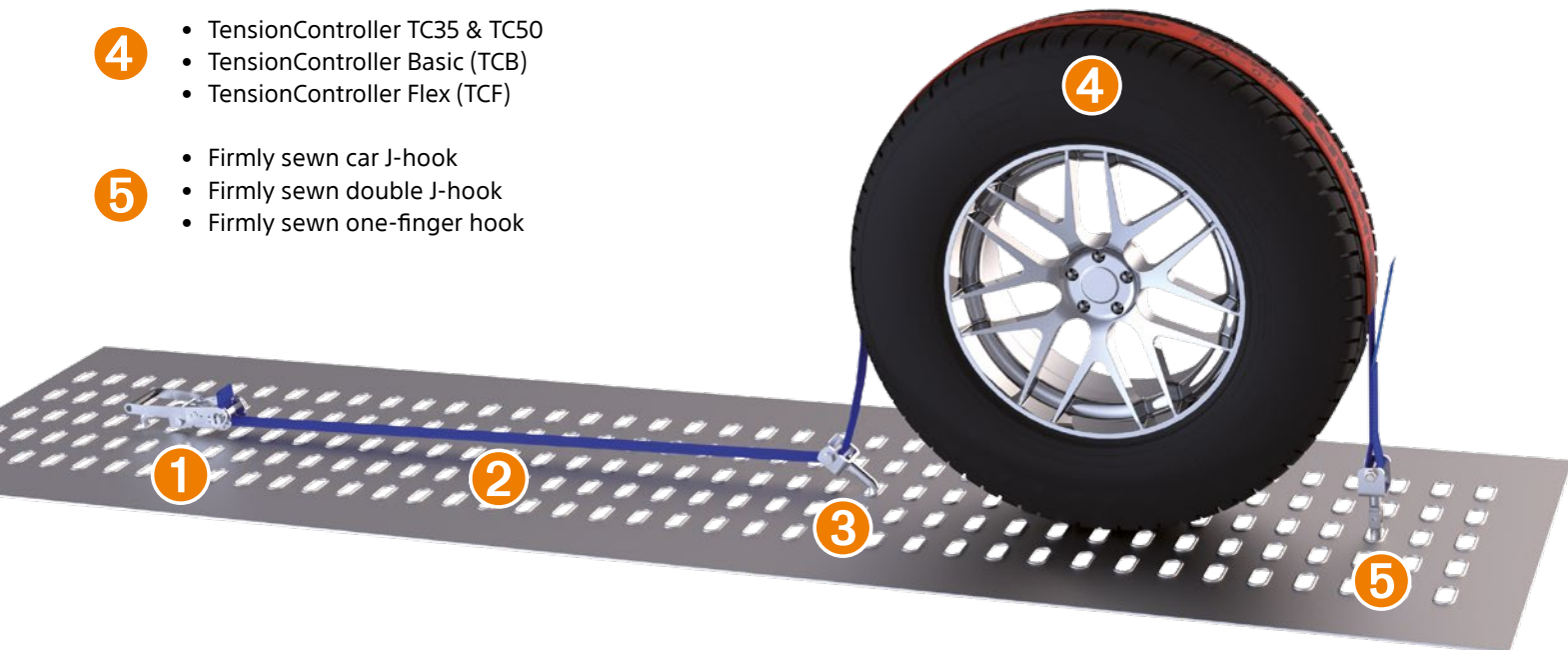


Car J-hook
H ≥ 18 mm
B ≥ 18 mm
D ≥ 40 mm



Does your perforated plate have different dimensions or a special shape? Please contact us and we will find a solution together.

- 1
 - Standard ratchet with integrated car J-hook (DoCarLash/car)
 - Short part (L = 0,3 m) with standard ratchet & car J-hook (DoCarLash/car)
 - Short part (L = 0,3 m) with transmission pull ratchet & car J-hook (DoTruckLash/truck)
- 2
 - Webbing with elongation ≤ 4,0% (PES)
 - Webbing with elongation ≤ 2,5% (PES & UHMWPE)
- 3
 - Loosely mounted car J-hook
 - Loosely mounted double J-hook
 - Loosely mounted one-finger hook
- 4
 - TensionController TC35 & TC50
 - TensionController Basic (TCB)
 - TensionController Flex (TCF)
- 5
 - Firmly sewn car J-hook
 - Firmly sewn double J-hook
 - Firmly sewn one-finger hook



Do you have questions about the product?
We will be happy to advise you.



Dolezych GmbH & Co. KG
Hartmannstraße 8
44147 Dortmund
+49 231 82 85-0
info@dolezych.de
www.dolezych.de/en/